

# TestkingPDF



Try before you buy

Download a free sample of any of our exam questions and answers

 Download Demo

- ✓ 24/7 customer support, Secure shopping site
- ✓ Free One year updates to match real exam scenarios
- ✓ If you failed your exam after buying our products we will refund the full amount back to you.



## Quality and Value

TestkingPDF Practice Exams are written to the highest standards of technical accuracy, using only certified subject matter experts and published authors for development - no all dumps.



## Tested and Approved

We are committed to the process of vendor and third party approvals. We believe professionals and executives alike deserve the confidence of quality coverage these authorizations provide.



## Easy to Pass

If you prepare for the exams using our TestkingPDF testing engine, It is easy to succeed for all certifications in the first attempt. You don't have to deal with all dumps or any free torrent / rapidshare all stuff.



## Try Before Buy

TestkingPDF offers free demo of each product. You can check out the interface, question quality and usability of our practice exams before you decide to buy.

<http://www.testkingpdf.com>

Valid test online & stable pass king & latest PDF dumps

**Exam** : **VCI510**

**Title** : VMware Certified Professional  
5 - Data Center Virtualization  
for Instructors

**Vendor** : VMware

**Version** : DEMO

NO.1 A VMFS3 datastore has just been upgraded to VMFS5.

In what two ways does this affect the datastore? (Choose two.)

- A. The existing VMFS3 block size is retained.
- B. The block size will be changed to 8MB.
- C. Any existing VMDK can be expanded up to 2TB.
- D. VMDKs retain their size limit from the VMFS3 block size.

**Answer:** A,C

Reference: <http://blogs.vmware.com/vsphere/2011/08/2tb-vmdks-on-upgraded-vmfs-3-tovmfs-5-really.html>

NO.2 What type of failure is VMware Fault Tolerance designed to protect against?

- A. A failure on the ESXi host running the primary virtual machine
- B. A failure on an application within the primary virtual machine
- C. Loss of storage connectivity to the primary virtual machine
- D. An operating system failure on the primary virtual machine

**Answer:** A

Reference:

[http://kb.vmware.com/selfservice/microsites/search.do?language=en\\_US&cmd=displayKC&externalId=1013428](http://kb.vmware.com/selfservice/microsites/search.do?language=en_US&cmd=displayKC&externalId=1013428)

NO.3 Which two statements are true regarding vSphere standard switches? (Choose two.)

- A. Beaconing requires at least three uplinks to be considered useful.
- B. Virtual machines on different vSwitches require the vSwitches to share an uplink to communicate.
- C. vSphere virtual switches require at least one uplink adapter.
- D. Setting the number of ports to the maximum on a vSwitch will exhaust the total ports on a host.

**Answer:** A,D

Reference:

[http://kb.vmware.com/selfservice/microsites/search.do?language=en\\_US&cmd=displayKC&externalId=1005577](http://kb.vmware.com/selfservice/microsites/search.do?language=en_US&cmd=displayKC&externalId=1005577)

<http://pubs.vmware.com/vsphere-50/topic/com.vmware.ICbase/PDF/vsphere-esxi-vcenterserver-50-networking-guide.pdf>

NO.4 An administrator is using Update Manager 5.x to update virtual appliances in a vSphere environment.

The environment is using the vCenter Server Virtual Appliance (vCSA).

What would cause the remediation to fail?

- A. Updating of the appliance can only be done if the vCenter Server Virtual Appliance (vCSA) has been put into Maintenance Mode.
- B. Remediation must be configured on the Appliance Administration page before use.
- C. Remediation of the vCenter Server Virtual Appliance (vCSA) with Update Manager is not supported.
- D. Remediation requires the hosts to be connected to vCenter using an IPv4 address.

**Answer:** D

Explanation:

Update Manager 5.0 does not support virtual machine patch baselines.

If a host is connected to vCenter Server by using an IPv6 address, you cannot scan and remediate virtual machines and virtual appliances that run on the host.

NO.5 When setting up the iSCSI software initiator on an ESX Server, which virtual switch port types are required? (Choose Two.)

- A. VMkernel
- B. iSCSI
- C. virtual machine
- D. Service Console

**Answer:** A,D

NO.6 What are two methods of maximizing VMFS performance for virtual machines across all the hosts in a cluster? (Choose two.)

- A. Use disk shares to prioritize virtual machine disk I/O
- B. Enable Storage I/O control
- C. Enable Storage DRS with I/O load balancing
- D. Enable Host Cache using local SSD drives

**Answer:** B,C

Explanation:

To maximize VMFS performance of virtual machines, you can enable Storage I/O control and storage DRS with I/O load balancing. Reference: <http://www.vmware.com/files/pdf/techpaper/VMW-vSphere41-SIOC.pdf>

NO.7 What are two requirements for successful vMotion migration? (Choose two.)

- A. CPUs with matching SpeedStep settings must exist on both the source and destination hosts.
- B. Virtual machines must not utilize hardware local to the host such as SCSI pass-through.
- C. Virtual machines must not have a CDROM connected via the vSphere client.
- D. Dedicated Gigabit Ethernet Networking must exist between the source and destination hosts.

**Answer:** B,C

Explanation:

To successfully use vMotion migration, virtual machines must not use hardware local to the host, for example, SCSI pass-through. The CD-ROM on the virtual machine must not be connected via vSphere client otherwise vMotion will not be able to migrate the VM successfully.

NO.8 Which three features are only available in the vSphere Client when using a vSphere Distributed Switch? (Choose three.)

- A. Port Mirroring
- B. PVLAN tagging
- C. Storage I/O Control
- D. Ingress Traffic Shaping
- E. 802.1q VLAN Tagging

**Answer:** A,B,D

Reference: <http://pubs.vmware.com/vsphere-51/topic/com.vmware.ICbase/PDF/vsphereesxi-vcserver-51-networking-guide.pdf>

NO.9 Acme Disposal Services is a large company which has many administrators. For auditing purposes, each administrator must use a unique account to access ESXi Standard hosts. Which two actions satisfy this requirement and require the least amount of administrative effort? (Choose two.)

- A. Configure Authentication Services for Active Directory based authentication to the ESXi hosts
- B. Configure a unique root level account for each administrator using the vSphere Client
- C. Configure user accounts in a host profile, then apply the host profile to the ESXi hosts
- D. Configure Active Directory group ESX Admins with each administrator's AD account

**Answer:** A,D

Reference:

[http://pubs.vmware.com/vsphere50/topic/com.vmware.wssdk.pg.doc\\_50/PG\\_Ch6\\_Authenticate\\_Authorize.8.3.html](http://pubs.vmware.com/vsphere50/topic/com.vmware.wssdk.pg.doc_50/PG_Ch6_Authenticate_Authorize.8.3.html)

NO.10 A database administrator has reported periodic poor performance on a particular virtual machine. The virtual machine administrator has noticed a significant drop in performance when utilized memory exceeds 1GB.

What does this indicate and what could be checked next?

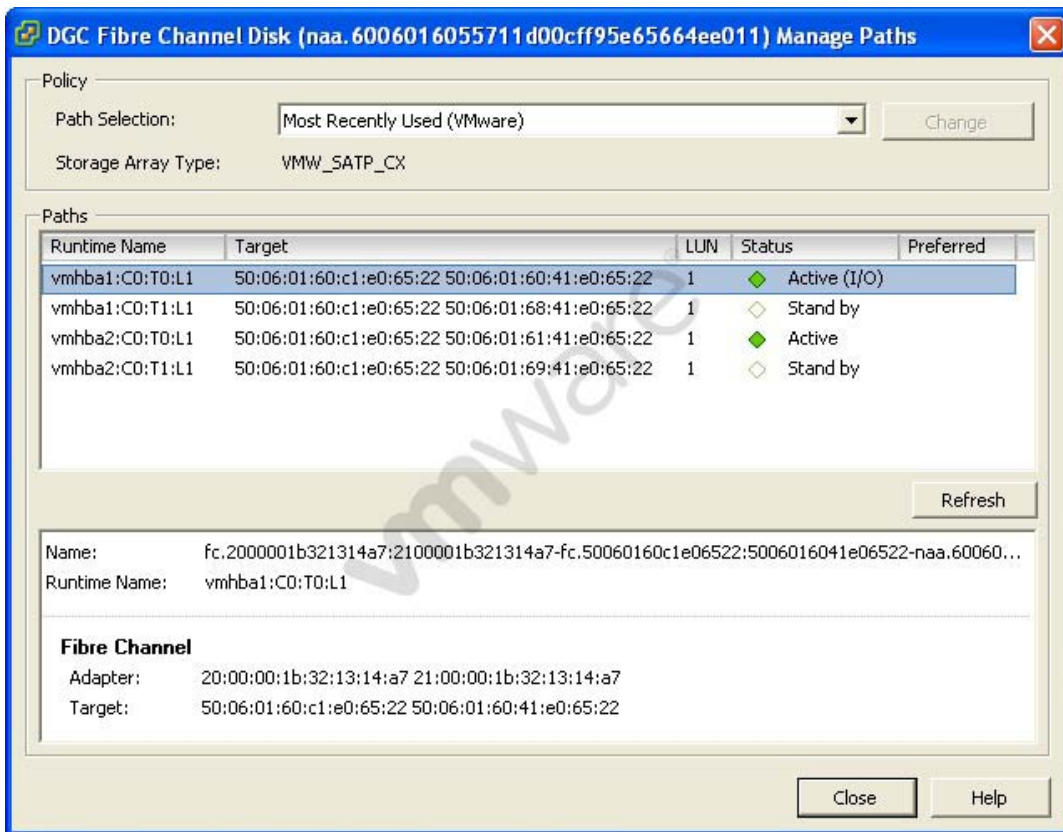
- A. The application problems are definitely due to a non-memory-related problem. CPU affinity settings should be checked for this virtual machine.
- B. The application problems are definitely due to a non-memory-related problem. CPU utilization should be checked next, using Windows Task Manager.
- C. The virtual machine might not have physical memory available. Compression and swap activity on the ESXi host should be checked next.
- D. The virtual machine might not have physical memory available. Ensure the memory limit on the VM is set to 0 MB.

**Answer:** C

Explanation:

If the performance degrades when the memory exceeds the allocated value, the virtual machine might not have physical memory available. Check compression and swap activity on ESXi host to see where the additional memory is going.

NO.11 Click the Exhibit button.



For the selected item, what two properties could the storage administrator use to create a zone?  
(Choose two.)

- A. 20.00.00.1b.32.13.14.a7
- B. vmhba1.C0.T0.L1
- C. fc.2000001b321314a7.2100001b321314a7
- D. 50.06.01.60.c1.e0.65.22

**Answer:** A,D

Explanation:

Fibre channel adapter and target needs to be used to create a zone.

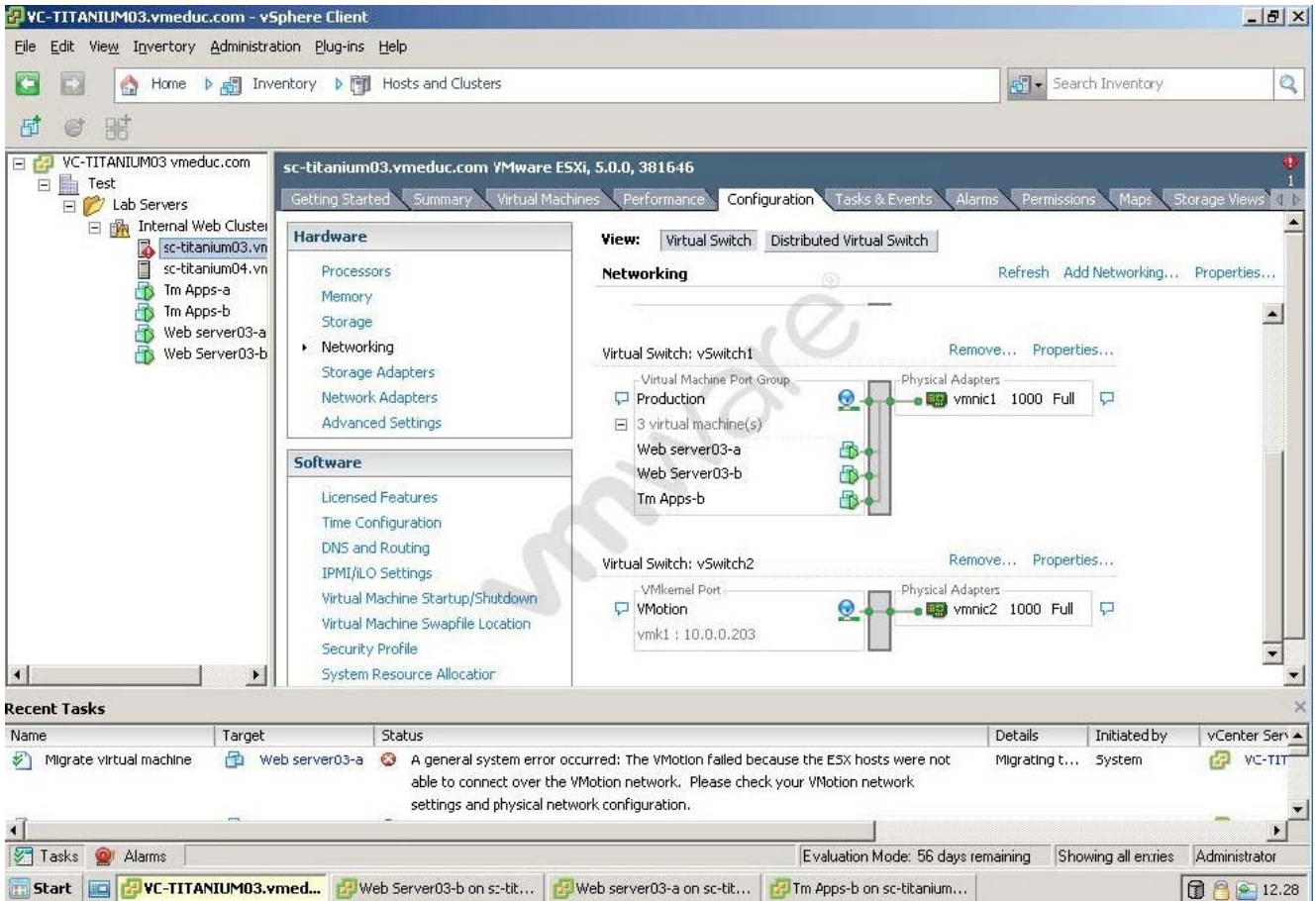
NO.12 What failure will beacon probing identify in vSphere networking?

- A. An improper VLAN configuration on a physical switch port
- B. A disconnected network cable
- C. A VMkernel IP mismatch affecting vMotion or HA traffic
- D. Jumbo frames improperly configured on an iSCSI target

**Answer:** A

Reference: <http://kensvirtualreality.wordpress.com/2009/04/10/the-great-vswitch-debatepart-4/>  
(see beacon probing)

NO.13 Click the Exhibit button.



An administrator has deployed a two-node cluster with HA and DRS enabled. DRS has been configured for fully automated mode. The management and vMotion interfaces have been configured on separate physical networks. Initial DRS testing on this cluster reveals that virtual machines are not being migrated despite great disparity in resource use between the ESX hosts in the cluster. The exhibit shows the error and the network configuration for one of the hosts.

Which task would successfully resolve this problem?

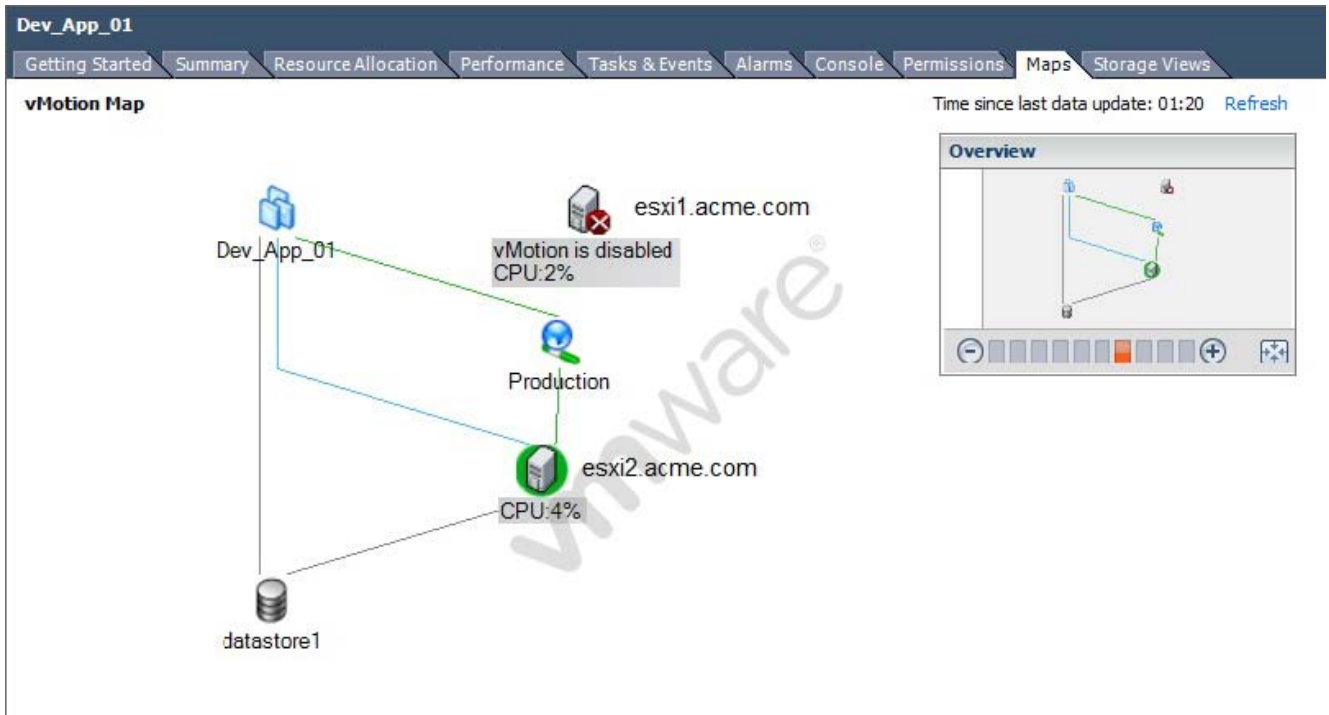
- A. Add a vmnic to the VMkernel port
- B. Configure the DRS Migration Threshold to Aggressive
- C. Connect the network cable to the correct physical network
- D. Migrate virtual machines manually using vMotion

**Answer: C**

Explanation:

Make sure that the network cable is connected to the correct physical network.

NO.14 -- Exhibit -



-- Exhibit -

Click the Exhibit button.

An administrator is configuring vMotion in their environment. As part of the implementation, an administrator is examining resource mapping for virtual machines.

What is a likely cause of the error shown in the exhibit?

- A. vMotion has not been enabled on a VMkernel portgroup.
- B. The administrator has not created a Management network.
- C. vMotion has not been enabled on the Production portgroup.
- D. vMotion has been disabled because there are no other hosts in the cluster with vMotion enabled.

**Answer: A**

Explanation:

The exhibit is showing vMotion disabled on esxi1.acme.com. The first thing to do is check if vMotion is enabled on the VMkernel portgroup.

NO.15 Which resource management technique can be used to relieve a network bottleneck caused by a virtual machine with occasional high outbound network activity?

- A. Convert the switch from a vNetwork Standard Switch to a vNetwork Distributed Switch.
- B. Create a new portgroup for the virtual machine and enable traffic shaping.
- C. Apply traffic shaping to the virtual machine with high activity.
- D. Apply traffic shaping to the other virtual machines in the same portgroup.

**Answer: B**

Explanation:

A network bottleneck caused by a virtual machines with high outbound network activity can be relieved by creating a new portgroup for the virtual machine and enable traffic shaping. A traffic shaping policy is defined by average bandwidth, peak bandwidth, and burst size. You can establish a traffic shaping policy for each port group and each distributed port or distributed port group.

ESXi shapes outbound network traffic on standard switches and inbound and outbound traffic on distributed switches. Traffic shaping restricts the network bandwidth available on a port, but can also be configured to allow bursts of traffic to flow through at higher speeds.

Topic 5, Establish and Maintain Service Levels